

Portable Filtration Unit

Delivers on-site transfer and filtration of low & high-viscosity oils. Compact, rugged, ideal for maintenance teams to extend component life and avoid downtime.



FEATURES:

- Variable Frequency Drive (VFD) provides full control of speed and flow for optimal filtration results
- Capable of filtering oils up to 1500 cSt
- Plug and play feature allows the user to quickly integrate the PFU into operation without extensive training
- Transfer valve allows for efficient transport of oil without filtering it

MATERIALS

Filter Housing:	Anodized Aluminum, Brass
Manifold and Lid:	Aluminum
Seals:	NBR, FPM
Couplings:	Steel
Frame:	Stainless Steel
Pump:	Steel and Aluminum

PERFORMANCE SPECIFICATIONS:

	PFU-L - Low Viscosity	PFU-H - High Viscosity
Nominal Flow Rate	2.1 GPM (8 l/min)	0.8 to 2.3 GPM (3 to 9 l/min) ²
Viscosity Range	10 - 500 cSt Filter element dependent (Contact Des-Case representative for higher viscosities compatibility)	10 - 1500 cSt Filter element dependent (Contact Des-Case representative for higher viscosities compatibility)
Oil Temperature Range	-4°F to 176°F (-20°C to 80°C) - Contact Des-Case representative for other oil temperatures	
Ambient Temperature Range	-4°F to 104°F (-20°C to 40°C) - Contact Des-Case representative for other ambient temperatures	
Protection Class & Power Supply	IP55 - See ordering code	
Filter Media	Glass fiber and water absorbing - See ordering code	
By-Pass Opening Pressure	90 psi (6.2 bar)	90 psi (6.2 bar)
Fluid Compatibility	Hydraulic and synthetic fluids according to DIN 51524, 51525. (Contact Des-Case representative for other fluid compatibility)	
Dry Weight	68 lbs (31 kg)	84 lbs (38 kg)

¹Note: Small variations in the manufacturing process can be common and will be within the allowable engineering tolerances. All above data is nominal and provided for information only and subject to change. All metric conversions are approximate.

²Note: Please refer to the Flow vs Viscosity chart for more information.

Typical Applications:

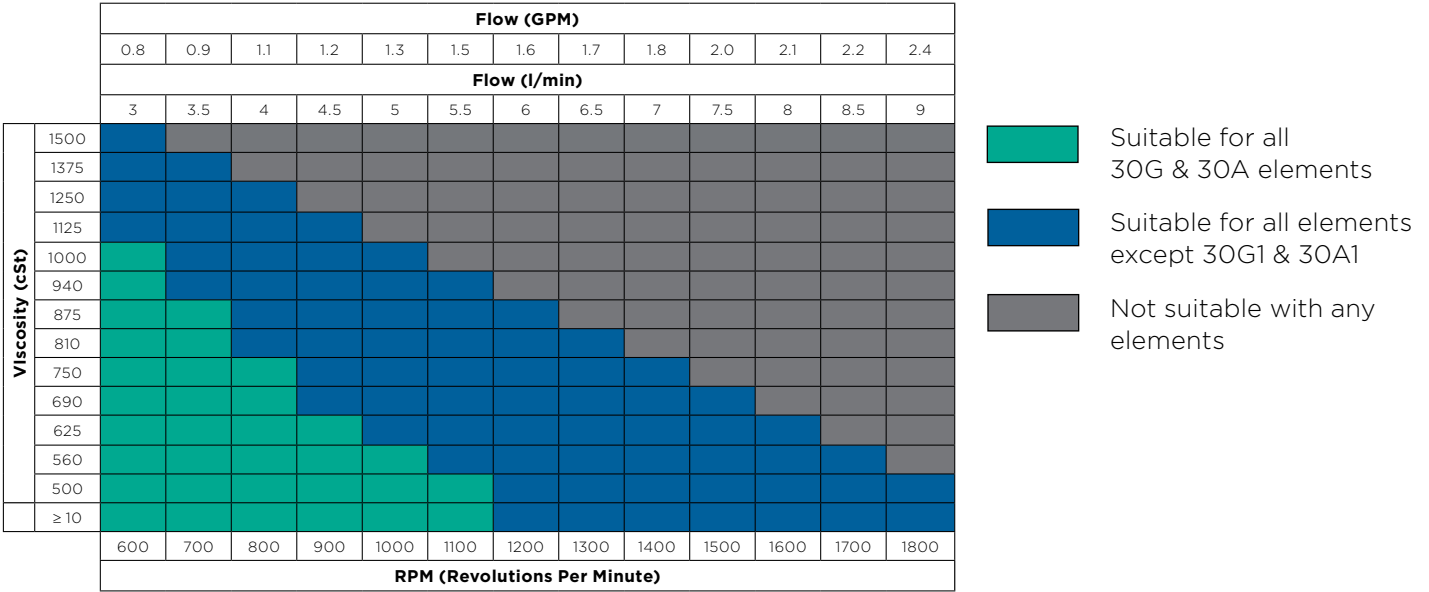
- Offline Filtration in hard-to-reach places
- Pre-fill & new oil filtration
- Flushing new or rebuilt assets
- Small reservoir top-offs or transfers
- Emergency filtration and decontamination

Typical Industries:

- Manufacturing & Industrial
- Power Generation
- Mining & Heavy Equipment
- Marine & Offshore
- Construction & Mobile Equipment
- Pulp & Paper
- Aviation & Ground Support



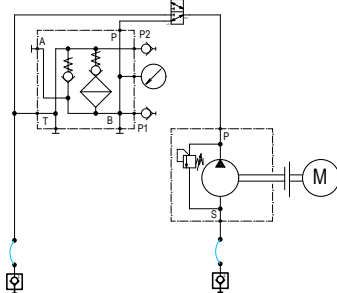
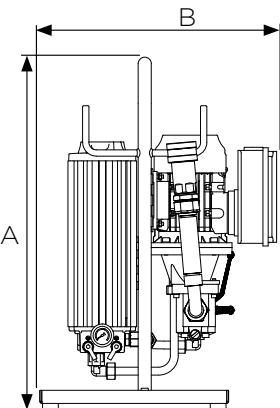
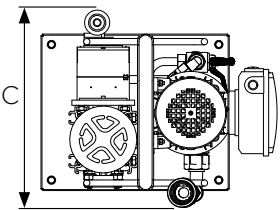
FLOW VS VISCOSITY SETTING CHART - PFU-H



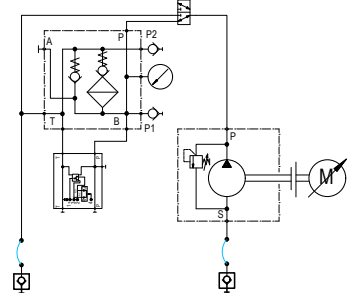
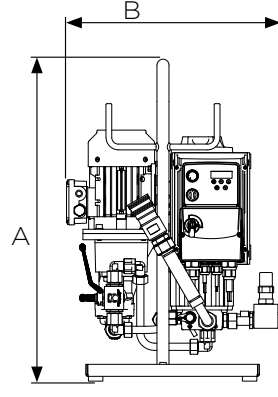
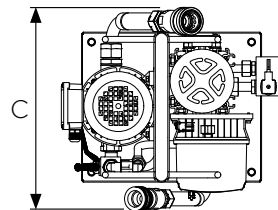
DIMENSIONS & HYDRAULIC DIAGRAM

	A (in / mm)	B (in / mm)	C (in / mm)	INLET	OUTLET
PFU-L	26.4 / 670	17.8 / 452	14.9 / 378	ISO B Quick Connect 1"	ISO B Quick Connect 3/4"
PFU-H	26.4 / 670	17.5 / 444	16.0 / 407	ISO B Quick Connect 1"	ISO B Quick Connect 3/4"

PFU-L



PFU-H





Ordering Codes

PFU-						
Box 1	Box 2	Box 3	Box 4	Box 5	Box 6	Box 7

Basic Configurations [Box 1]	
Code	Description
PFU	Portable Filtration Unit

Viscosity Configurations [Box 2]	
Code	Description
L	Low-Viscosity (Up to 500 cSt)
H	High-Viscosity (Up to 1500 cSt)

Input Voltage Options [Box 3]	
Code	Description
1	400(Y) VAC 50 Hz 3 Phase
2	480(Y) VAC 60Hz 3 Phase
3	230 VAC 50Hz 1 Phase (Standard)
4	110 VAC 60Hz 1 Phase

Hydraulic Connections [Box 4]	
Code	Description
B1	ISO B connection, 1" Inlet & 3/4" Outlet, includes 2 meter hydraulic hoses

Filter Material [Box 5]	
Code	Description
G1	Microglass 1 micron; $\beta_4(c) > 1000$
G3	Microglass 3 micron; $\beta_5(c) > 1000$
G6	Microglass 6 micron; $\beta_7(c) > 1000$
G10	Microglass 10 micron; $\beta_{10}(c) > 1000$
A1	Microglass and water absorbing Polymer 1 micron; $\beta_1(c) > 200$
A5	Microglass and water absorbing Polymer 5 micron; $\beta_5(c) > 200$

System & Element Seals [Box 6]	
Code	Description
B	Buna-N - NBR (Standard)
V	Viton - FPM

Electrical Plug [Box 7]	
Code	Description
O	None
EU	EU Plug
US	US Plug

TS1027_EN_103125